

## **Moray Firth Cycling Club – Croachy 10 Mile TT**

This is the information on the course for the Croachy 10m TT, which is part of this summer's virtual series of time trials.

### **The Start**

The start is on the B851 and is located past Flichity Lodge approximately 100m after the humpback bridge, that is 100m prior to the junction on the right hand side of the road sign posted "Dunlichity".

See photo of start below:



## The Course

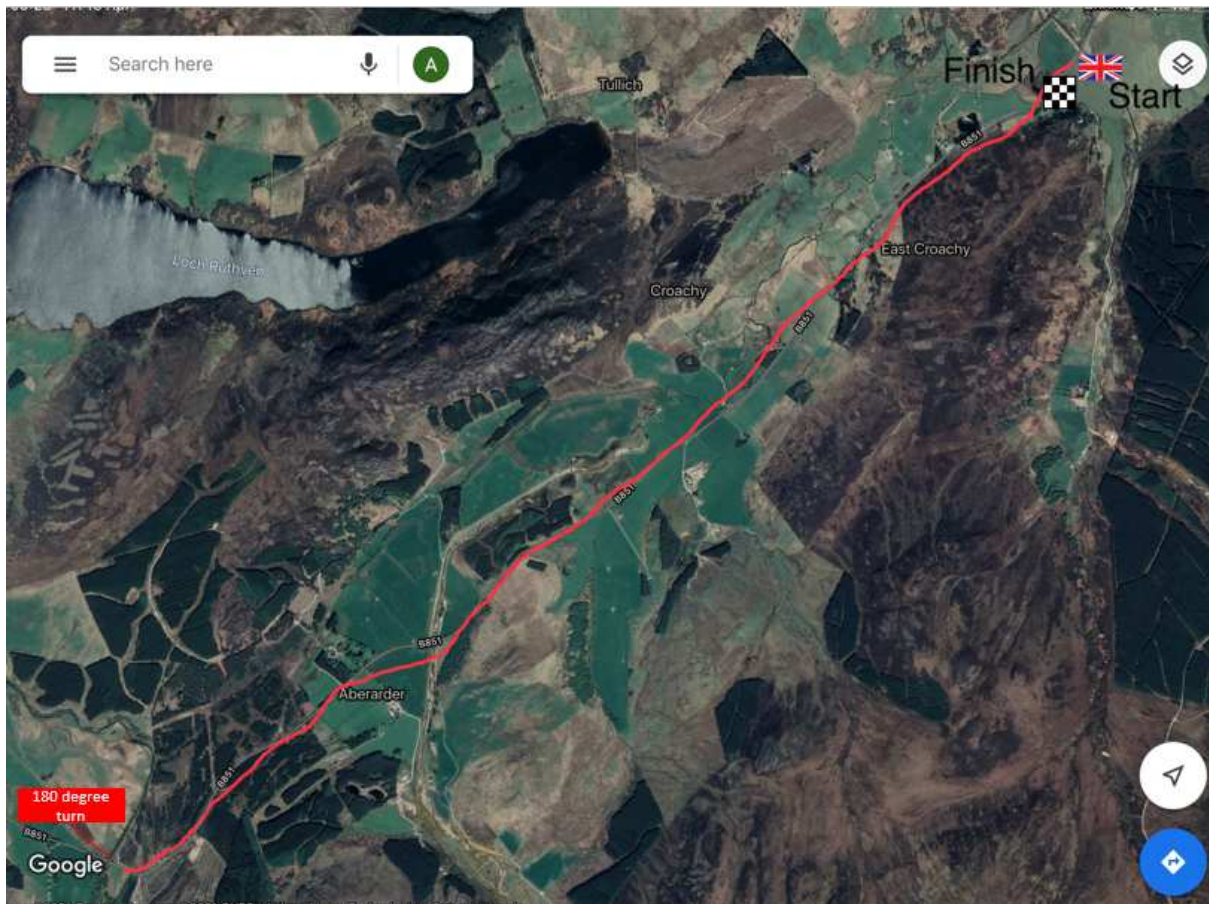
The course follows the B851 through Croachy. Please take care as the road narrows on entrance and exit of the village. The route continues to the turn point at the entrance to Dunmaglass wind farm on a 90 degree right-hand bend. The turn point is a 180 degree turn at 5miles and you return on the B851 through Croachy to the finish.

The turn point is as illustrated below:





The course is as illustrated below:



## The Finish

The finish is located on the B851 approximately 100m before the start point at the junction on the left hand side of the road signposted "Dunlichity".

See photo of finish below:

