

Moray Firth Cycling Club – Dores Hill Climb

This is the information on the course for the Dores Hill Climb, which is part of this summer's virtual series of time trials.

The Start

The start is on the B862 in Dores village on the top side of the entrance to Torr Gardens.

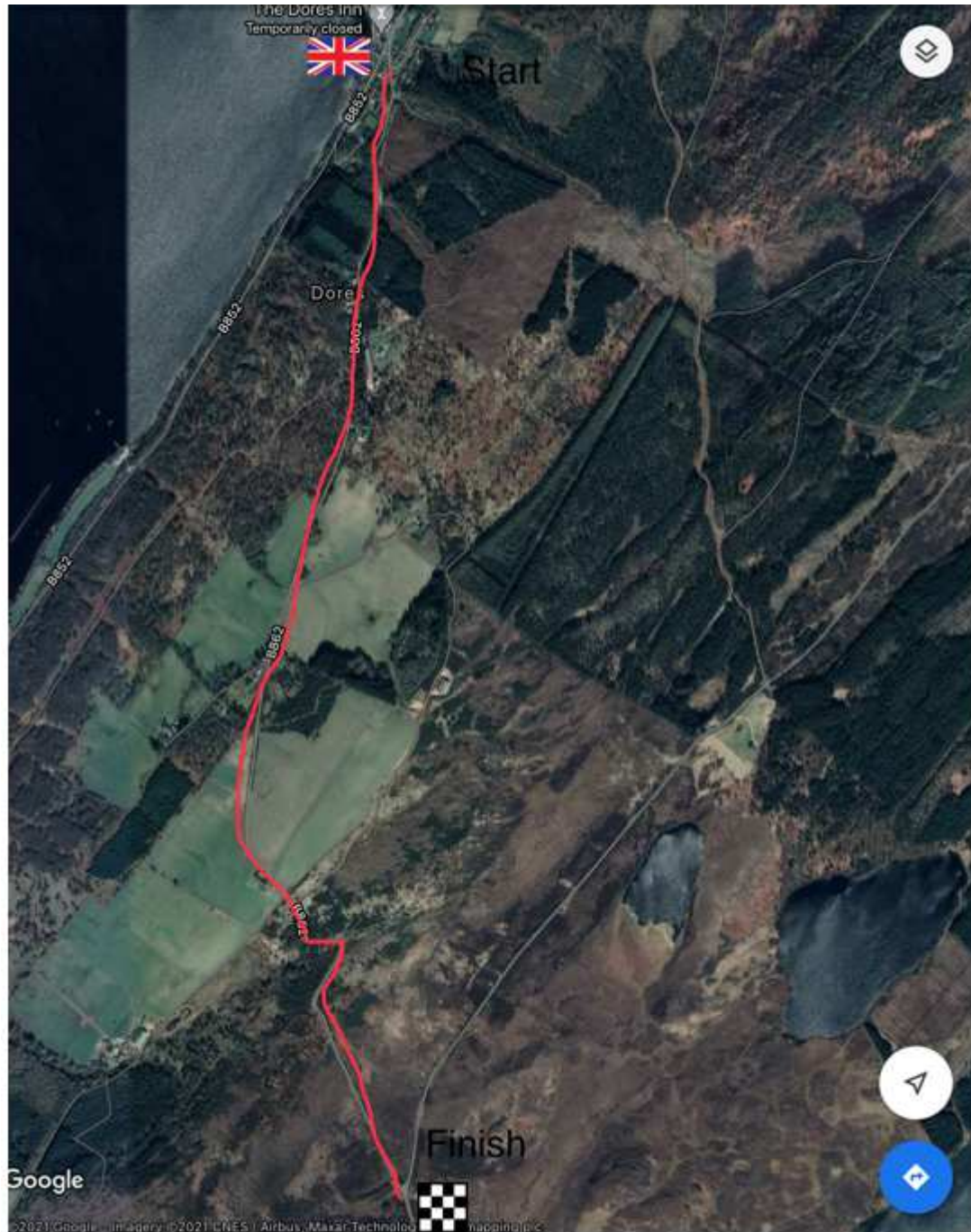
See photo of start below:



The Course

The course follows the B862 to the top of the hill and finishes just before the junction on left hand side with the road from Essich approximate distance from the start is 2.8 miles.

The course is as illustrated below:



The Finish

The finish is located on the B862 just after the junction directional arrow painted on the road and 10 meters before the junction.

See photo of finish below:

